



---

Introducing Linkup Internet of Things services  
"Smart House, Smart Building"



---

☎ +989131830795

✉ [info@ati-ryan.com](mailto:info@ati-ryan.com)

🌐 [www.ati-ryan.com](http://www.ati-ryan.com)

---

4 Getting to know the smart building based on the Internet of Things

6 Getting to know Linkup

10 Getting to know the central hub and Linkup application

13 Getting to know Linkup Mart

15 Introducing building smart solutions

56 Custom services



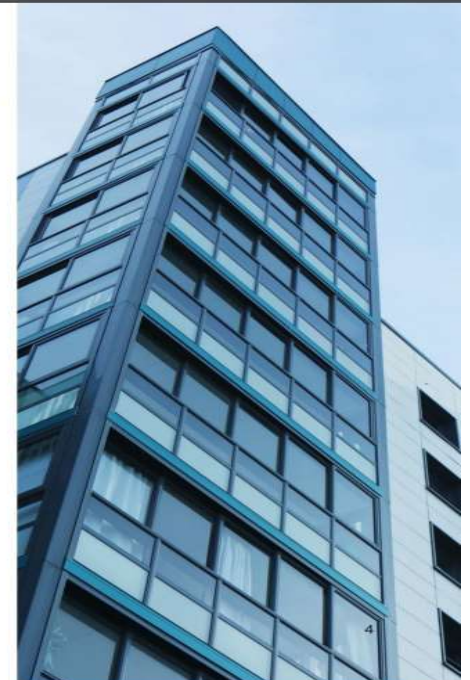
### Getting to know the smart building based on the Internet of Things

Smartening of a building (commercial) complex, Office or residential (by connecting the main parts), buildings such as water consumption measurement systems and Energy, lighting, security, heating, cooling and... to a central platform and integrated and intelligent operation They are realized next to each other. The most important The advantages that intelligent building based on the Internet

It will include the following items:

- 1- Increasing productivity and reducing energy consumption
- 2- Increasing the safety and security of the building
- 3- Simplicity of processes and greater comfort for residents

Employees.



### 3 steps to smart building

**01** First, choose the services you want on the website or fill out the form to receive a free consultation, so that Linkup's support staff will contact you to complete the process.



**02** The provided smart building and Internet of Things equipment are easily installed and set up in the environment within a few hours.



**03** Done! Now you can use all the services of the smart building of your smart home through the application and website. Easily manage Linkup Integration.

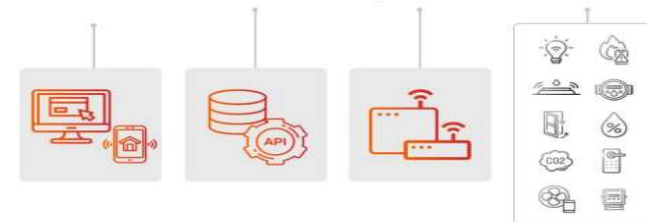


### (Internet of Things Leaders Company)

As the first and only provider of the complete chain of Internet of Things solutions in the country, Linkop It helps you to choose your needs from among the various options provided and receive them simply and in an integrated manner, based on the latest technologies of "IoT Linkup Core".

Linkup's "IoT core" by presenting and integrating the latest technologies in the field of Internet of Things (IoT) and smart creation, the possibility of collecting and analyzing data, managing equipment and visualizing them through

Website and application provide link.



### Getting to know the central hub and Linkup application

#### Smart Linkup application

Smart Linkup application enables the management of smart building services in an integrated manner

It provides users with mobile phones.



To use this application, you need to User once installed, simply hub Central link and installed sensors to Introduce software. From then on, it is possible to manage Equipment and scenario definition with Linkup application Smart will be available. For example, you can Define a scenario when traveling When the door is opened, the lights will turn on The siren will sound.

One of the most important advantages of smart building with Linkop Internet of Things technology is performance It integrates all smart equipment together. This possibility is possible by using the central hub of Linkup and Their control is provided through the Smart Linkup application.

#### The central hub of the Linkup smart home (Hub Short Range Linkup)

Linkup smart home hub (Hub-SR Linkup) with Using new Internet of Things protocols such as ZigBee (ZigBee), the possibility of easy management and Integrated a wide range of smart home equipment with different brands (Philips, Xiaomi, IKEA) and provides...



Reference for review, selection and online purchase of building smart equipment and Internet of Things



For easier access of users to compatible equipment  
 With the hub and linkup app, some of these equipment  
 For more detailed review and purchase, in the online store  
 "Link Mart" have been offered.  
 Thus, users can meet all their needs  
 In the field of intelligence, order with just a few clicks  
 give Manufacturers and distributors of products  
 Smart can also offer their products from  
 Contact us through this platform.

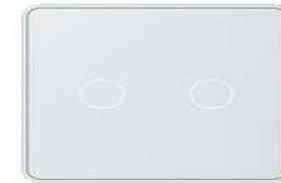
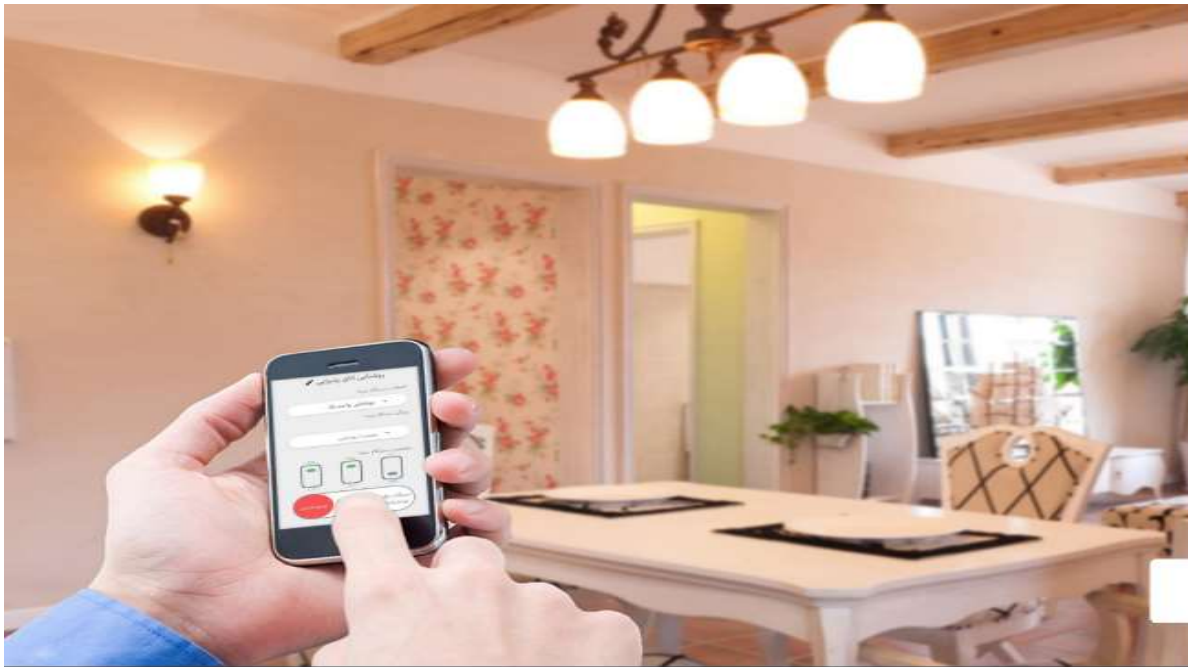
The most reliable brands in the world are compatible with



- Smart
  - Ability to unlock by entering password, fingerprint, card or mobile phone RFID
  - Entry of information and exit of people with the possibility of monitoring the function of the lock
  - Using the Smart Linkap application
  - Increased security while quick and easy access
  - It has features such as automatic lock timer, low reminder
  - Battery, possible failure report and...
  - Easy installation on all types of doors

as an example. For each service, a variety of brands with the features of the service image only  
 Various can be used by scanning the QR-Code of each page to get more information about it  
 you will achieve



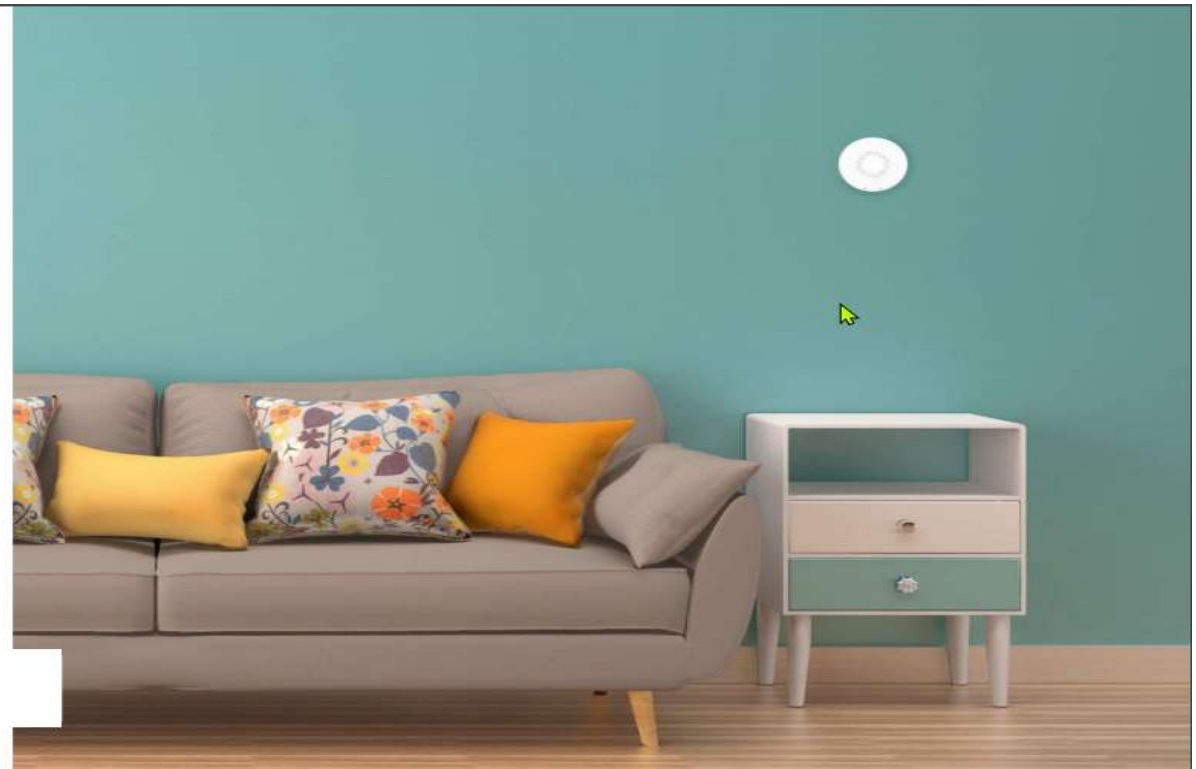


- The possibility of controlling the lighting system remotely using Smart Linkap application
- Defining the scenario for the lighting system and reducing energy consumption
- Collection and analysis of lighting data of each part of the building
- Early detection of possible failures in the lighting system
- Increasing security by defining the lighting schedule during travel times



**Air**

- Monitoring indoor air quality (temperature, humidity, CO2 and ... (and lighting level)
- Notification of warning in case of recording more than the allowed amount of parameters
- air quality
- The possibility of defining the scenario in an integrated manner with the intelligent system
- Ventilation control





## Smart

Water consumption monitoring of each unit separately

Smart Linkap application

View the analytical chart of the amount and pattern of water consumption

Separation of water consumption costs for each part of the building

Improving the pattern of water consumption and reducing costs

Early detection of possible leaks

No need for electricity and wiring

Battery life up to 10 years



Intelligent control of ventilation, heating and cooling systems

The possibility of defining the scenario according to the parameters defined by

User to use building ventilation systems

and humidity from the ambient air Get the status of temperature parameters

Saving energy and costs

Constant monitoring of the operation of ventilation systems and the possibility of receiving

Possible crash report.

## Air



Smart

- ▶ Daily monitor of energy consumption in each part of the complex
- ▶ Viewing the analytical charts of each unit separately
- ▶ Improving the pattern of electricity consumption and significantly reducing energy consumption and costs
- ▶ Easy installation and operation with affordable cost
- ▶ Separation of electricity consumption and cost in complexes with shared meters



- ▶ Ensuring the security of the home and work environment and preventing thieves from entering the door
- ▶ Hours of absence
- ▶ Travel times and
- ▶ Monitoring the entry and presence of people in non-working hours in the complexes
- ▶ Administrative and commercial
- ▶ Notification of warning to the user immediately after detecting the presence of the person in the door
- ▶ Unauthorized hours
- ▶ Definition of an integrated scenario with other intelligent systems such as
- ▶ Lighting and ventilation system





Door sensor



## Door

- Improving the security of units in residential and commercial buildings ▶
- Warning of opening sensitive doors and windows during unauthorized hours ▶
- Record the history of opening and closing doors ▶
- The possibility of defining the scenario in an integrated manner with other systems ▶
- Energy consumption monitoring through door and window opening monitoring ▶
- No need for electricity and wiring and battery operation ▶



- The possibility of online monitoring of the status of fire detection sensors ▶
- Notification of warning in case of detection of fire in the environment ▶
- system ▶
- Timely notification in case of any errors and failures in the ▶
- fire detection ▶
- The possibility of defining the scenario in an integrated manner with complementary systems ▶
- fire extinguishing ▶
- Easy installation and battery operation ▶

## Fire







- The possibility of easy installation of the sensor in sensitive places (engine houses, Warehouses, archives, data centers, etc. (to detect leaks and flooding) ◀
- Notification of warning if water is detected ◀
- Preventing wastage and damage caused by water leakage ◀
- No need for electricity, wiring and... ◀
- Long battery life ◀

## Water



- The possibility of detecting the presence of carbon monoxide gas, methane (city gas) and Other indoor toxic gases depending on the selected sensor ◀
  - The possibility of monitoring the current status of the amount of toxic gases in the environment ◀
  - Receive alerts through the Smart Linkap application ◀
  - Sound alarm notification in case of gas leak detection ◀
  - The possibility of defining the scenario in an integrated manner with other systems ◀
- smart

## Gas





## Smart

- Use as a supplement to safety and security systems ◀
- Voice alarm notification in case of danger in the environment ◀
- Operation with city electricity ◀
- It has a built-in backup battery for power outages ◀

38



- Sending the command to open or close the valves (water and gas) remotely and travel ◀
- Fixing the problem of lack of access and the difficulty of opening and closing valves ◀
- The possibility of defining a scenario to open or close the valves in hours or ◀

## Intelligent

Special situations



41



**Smart**

- ▶ The possibility of managing and connecting and disconnecting each outlet by remote control
- ▶ The ability to control and monitor the amount of electricity consumed by electrical appliances
- ▶ Analytical charts
- ▶ The possibility of defining a scenario to disconnect or connect the power flow in each outlet
- ▶ Monitoring and detection of excessive electricity consumption
- ▶ It has two types of facing and built-in



**Smart**

- ▶ The ability to send a command to change the state of the curtain remotely
- ▶ It is possible to set the scenario and program of the opening and closing hours of the curtains
- ▶ The possibility of integrated operation with the ambient light sensor





- ▶ The possibility of integrated control of equipment with remote control (IR)
  - ▶ The possibility of defining the scenario in an integrated manner with other systems
- smart

Infrared



Smart

- ▶ humidity Measurement of vital soil parameters such as temperature and
- ▶ Identifying the best watering time
- ▶ The possibility of defining the scenario in an integrated manner with the valve controller





**I**

**SOS**

- Very easy to use for the elderly and children (just by pressing) ▶
- Send alert message on mobile phone ▶
- Can be used in homes, kindergartens, construction workshops, ▶
- Mines, hospitals, nursing homes and... ▶
- The possibility of using it as a key to receive orders in restaurants and... ▶
- No need for electricity and wiring and long-term battery operation ▶

a button

Send alert message on mobile phone

Can be used in homes, kindergartens, construction workshops,

Mines, hospitals, nursing homes and...

The possibility of using it as a key to receive orders in restaurants and...

No need for electricity and wiring and long-term battery operation



**Smart**

- The possibility of round-the-clock remote monitoring of the smart building ▶
- Easy installation anywhere in the building ▶
- It has a motion detection sensor and the ability to send notifications to the user ▶
- Built-in microphone and speaker for remote two-way communication ▶
- It has night vision technology and the ability to record images in total darkness ▶





- The ability to monitor and control all smart equipment through Smart Linkap application
- Has a stylish and beautiful appearance
- It has a simple user interface for use by children and the elderly

Smart



Smart parking system

People counting system (traffic counter)

Custom

Custom



- Collecting and monitoring information related to the status of filling or empty
- Each of the parking spaces is empty
- Spend less time searching for a parking space in a complex
- It is possible to record information about the time of entry and exit of cars
- No need for electricity and wiring and the possibility of operation with batteries



- Registering information on the number of people who refer to the collection
- Different time periods and busy days to acquire data such as hours
- Commercial complexes
- The possibility of predicting the situation in the coming days according to the history data
- Resource management and planning according to the information obtained
- No need for electricity and wiring and battery operation